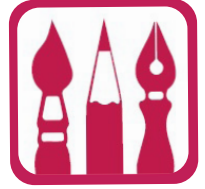




NASHUA
COMMUNITY COLLEGE

FALL 2020 COURSE SCHEDULE



nashuacc.edu

603.578.8908

505 Amherst St. Nashua, NH, 03063

KEY COURSE SCHEDULE DEFINITIONS

- CRN:** The course code number that you need to enter to register for a course.
- CR:** The number of credits for a course.
- DATE:** The date range that a course runs in month/day (mm/dd) format.
- DAYS:** The specific days of the week that a course meets.
- (H)** Indicates course is HYBRID.
- (P)** Indicates course that requires a Prerequisite.
- (C)** Indicates course that requires a Co-requisite.
- (NOLO)** No or Low cost course materials. Textbooks and other materials for these courses cost under \$40.

List does not include Automotive Technology, Aviation Technology, Collision Repair Technology, Honda/Acura, or Nursing. For complete course descriptions and updates visit: nashuacc.edu

Online 100% Online Course - Courses that do not physically meet on campus during the semester, all instruction takes places in an online environment.

1st Half 8 weeks 8/31-10/24	Full term 16 weeks 8/31-12/19	Online
2nd Half 8 weeks 10/26-12/19		

Tuition

	Per Credit
NH Resident	\$215.00
New England Regional Student Program	\$323.00
Nonresident	\$490.00
Comprehensive Fee (per credit)	\$23.00

REFUND POLICY

Students who officially withdraw from the College or an individual course by the end of the fourteenth (14th) calendar day of the semester will receive a 100% refund of tuition, less-nonrefundable fees. Classes that meet in a shorter format than the traditional semester will have 7 calendar days from the designated start of the alternative semester to withdraw for a full refund. If the seventh (7th) or fourteenth (14) calendar day falls on a weekend or holiday, the drop refund date will be the first business day following the holiday or weekend. Exception: students in courses that meet for two weeks or fewer must drop by the end of the first day of the class in order to get a 100% refund. All Federal Title IV funds (i.e. Pell, SEOG, Perkins Loans, Stafford Loans) are returned to the federal programs according to the rules and regulations mandated by the Department of Education. All refunds require that students complete an official withdrawal form. In accordance with Federal regulations, refunds for an amount less than \$1.00 (\$0.99 or less) will be forfeited.

FALL SCHEDULE

ACCOUNTING

CRN	COURSE	TITLE	CR	DATE	DAYS	TIME	COST
11881	ACCT101N	Financial Accounting I	4	08/31-12/19	TR	01:00-02:50PM	952
11882	ACCT101N	Financial Accounting I	4	08/31-12/19	WF	08:00-09:50AM	952
11883	ACCT101N	Financial Accounting I	4	08/31-12/19	TR	03:00-04:50PM	952
12019	ACCT101N	Financial Accounting I	4	08/31-10/24	TR	06:00-09:30PM	952
12028	ACCT102N	Financial Accounting II (P)	4	10/26-12/19	TR	06:00-09:30PM	952
11884	ACCT201N	Intermediate Accounting I (P)	4	08/31-12/19	TR	01:00-02:50PM	952
11885	ACCT210N	Managerial Accounting (P)	3	08/31-12/19	M W	10:00-10:50AM 10:00-11:50AM	714

BUSINESS

CRN	COURSE	TITLE	CR	DATE	DAYS	TIME	COST
11721	BUS101N	Introduction to Business	3	08/31-12/19	R T	10:00-11:50AM 10:00-10:50AM	714
11722	BUS101N	Introduction to Business	3	08/31-12/19	R T	01:00-02:50PM 01:00-01:50PM	714
11723	BUS101N	Introduction to Business	3	08/31-12/19		Online	714
12029	BUS101N	Introduction to Business	3	10/26-12/19	MW	06:00-08:30PM	714
12030	BUS104N	Principles of Marketing	3	10/26-12/19	TR	06:00-08:30PM	714
12456	BUS206N	Consumer Behavior (P) HYBRID	3	08/31-12/19	T	01:00-02:50PM	714
11724	BUS110N	Principles of Management	3	08/31-12/19		Online	714
11725	BUS201N	Human Resource Management (P)	3	08/31-12/19		Online	714
11726	BUS207N	Sales HYBRID	3	08/31-12/19	F	09:00-11:50AM	714
11727	BUS213N	Principles of Advertising	3	08/31-12/19	M W	11:00-11:50AM 10:00-11:50AM	714
11728	BUS215N	Integrated Marketing Comm (P) HYBRID	3	08/31-12/19	M	08:00-10:50AM	714
12457	BUS218N	Dynamics of Organ Behavior HYBRID	3	08/31-12/19	R	10:00-11:50AM	714
11729	BUS230N	Introduction to MIS	3	08/31-12/19	M W	08:00-09:50AM 09:00-09:50AM	714
11730	BUS240N	Business Law	3	08/31-12/19		Online	714
12031	BUS240N	Business Law	3	10/26-12/19	MW	06:00-08:30PM	714

BUSINESS COMPUTERS

CRN	COURSE	TITLE	CR	DATE	DAYS	TIME	COST
11733	BCPT119N	Software Applications	3	08/31-12/19		Online	824
12040	BCPT119N	Software Applications	3	08/31-12/19	M	06:00-09:30PM	824
12041	BCPT119N	Software Applications	3	08/31-12/19	S	08:00-11:50AM	824
12007	BCPT119N	Software Applications	3	08/31-12/19	TR	08:00-09:50AM	824
11731	BCPT119N	Software Applications	3	08/31-12/19	TR	10:00-11:50AM	824
12008	BCPT119N	Software Applications	3	08/31-12/19	MW	01:00-02:50PM	824
12009	BCPT208N	Spreadsheets: EXCEL	3	08/31-12/19	MW	01:00-02:50PM	824
11732	BCPT216N	Desktop Publishing	3	08/31-12/19	MW	03:00-04:50PM	824

COMMUNICATIONS

CRN	COURSE	TITLE	CR	DATE	DAYS	TIME	COST
11983	COMM102N	Principles of Communication (P)	3	08/31-12/19	M	03:00-03:50PM	714
					W	03:00-04:50PM	
11914	COMM115N	Introduction to Media Writing (P)	3	08/31-12/19	M	01:00-02:50PM	714
					W	01:00-01:50PM	
12458	COMM210N	Perspectives in Film (P) (NoLo)	3	08/31-12/19	R	03:00-04:50PM	714
					T	03:00-03:50PM	

COMPUTER SCIENCE

CRN	COURSE	TITLE	CR	DATE	DAYS	TIME	COST
11888	CSCI106N	Intro to Software & Web Dev	3	08/31-12/19	M	08:00-08:50AM	714
					W	08:00-09:50AM	
12495	CSCI107N	HTML	3	08/31-12/19	TR	08:00-09:50AM	824
12496	CSCI107N	HTML	3	08/31-12/19		Online	824
11889	CSCI161N	Intro to Programming (P)	3	08/31-12/19	TR	01:00-02:50PM	824
11890	CSCI161N	Intro to Programming (P)	3	08/31-12/19	TR	10:00-11:50AM	824
11891	CSCI201N	Client-Side Scripting JavaScri (P)	3	08/31-12/19	MW	03:00-04:50PM	824
11892	CSCI207N	Database Design & Management (P)	3	08/31-12/19	WF	08:00-09:50AM	824
11893	CSCI230N	Object Oriented Prog Using C++ (P)	3	08/31-12/19	TR	01:00-02:50PM	824
11953	CSCN101N	Computer Archit & Oper Sys	3	08/31-12/19	R	10:00-12:50PM	874
					T	10:00-11:50AM	
11954	CSCN101N	Computer Archit & Oper Sys	3	08/31-12/19	R	01:00-03:50PM	874
					T	01:00-02:50PM	
11956	CSCN104N	Internet of Things (NoLo)	3	08/31-12/19	R	04:00-05:50PM	874
					T	03:00-04:50PM	
11988	CSCN104N	Internet of Things	3	08/31-12/19	MW	10:00-11:50AM	874
11957	CSCN116N	Networking Basics (P/C) (NoLo)	3	08/31-12/19	MW	10:00-11:50AM	874
11981	CSCN116N	Networking Basics (P/C) (NoLo)	3	08/31-12/19	MW	01:00-02:50PM	874
11987	CSCN116N	Networking Basics (P/C) (NoLo)	3	08/31-12/19		Online	874
11958	CSCN150N	Fundamentals of Cybersecurity (P)	3	08/31-12/19	R	06:00-09:30PM	874
11959	CSCN170N	Linux Essentials (NoLo)	3	08/31-12/19	M	06:00-09:30PM	874
11960	CSCN204N	Administering Windows Servers (P)	3	08/31-12/19		Online	874
11961	CSCN204N	Administering Windows Servers (P)	3	08/31-12/19	TR	03:00-04:50PM	874
11962	CSCN210N	Advanced Windows Servers (P)	3	08/31-12/19	W	06:00-09:30PM	874
11963	CSCN211N	Network Security Monitoring (P) (NoLo)	3	08/31-12/19	MW	03:00-04:50PM	874
11964	CSCN216N	Routing & Switching Essentials (P) (NoLo)	4	08/31-12/19	MW	06:00-08:30PM	1112
11965	CSCN217N	Scaling Networks (P) (NoLo)	3	08/31-12/19	TR	01:00-02:50PM	874
11966	CSCN217N	Scaling Networks (P) (NoLo)	3	08/31-12/19	TR	10:00-11:50AM	874
11986	CSCN250N	CCNA Security (P) (NoLo)	3	08/31-12/19	R	06:00-09:30PM	874

CRIMINAL JUSTICE

CRN	COURSE	TITLE	CR	DATE	DAYS	TIME	COST
11908	CRMJ101N	Intro to Criminal Justice	3	08/31-12/19	R	10:00-11:50AM	714
					T	10:00-10:50AM	
12062	CRMJ101N	Intro to Criminal Justice	3	08/31-12/19		Online	714
11909	CRMJ102N	Criminology (C)	3	08/31-12/19	R	01:00-01:50PM	714
					T	01:00-02:50PM	
11735	CRMJ220N	Juvenile Justice (P)	3	08/31-12/19	R	02:00-03:50PM	714
					T	03:00-03:50PM	
11736	CRMJ240N	Criminal Law and Prosecution (P)	3	08/31-12/19	R	04:00-04:50PM	714
					T	04:00-05:50PM	
13635	CRMJ280N	Criminal Justice Internship (P)	3	08/31-12/19		Online	714

CULINARY ARTS

CRN	COURSE	TITLE	CR	DATE	DAYS	TIME	COST
11977	CULA103N	Culinary Skills and Procedures	3	08/31-12/19	M	01:00-01:50PM	1134
11992	CULA103N	Culinary Skills and Procedures (LAB)	0	08/31-12/19	M	02:00-06:50PM	0
11856	CULA105N	Food Safety and Sanitation HYBRID	2	08/31-12/19	R	01:00-01:50PM	586
11978	CULA120N	Fundamentals of Baking (P)	3	08/31-12/19	W	01:00-01:50PM	1134
11993	CULA120N	Fundamentals of Baking (P) (LAB)	0	08/31-12/19	W	02:00-05:50PM	0
12048	CULA211N	American Regional Cuisine (P)	3	08/31-12/19	T	09:00-12:50PM	1134
12049	CULA222N	Classical Cuisine (P)	3	08/31-12/19	R	08:00-12:50PM	1134
12050	CULA235A	Customer Service I (NoLo)	2	08/31-12/19		Online	586

DATA ANALYTICS

CRN	COURSE	TITLE	CR	DATE	DAYS	TIME	COST
12021	DATA101N	Introduction to Data Analytics HYBRID	3	08/31-10/24	S	08:00-11:50AM	824
12022	DATA105N	Data Mining (P) HYBRID	3	10/26-12/19	S	08:00-11:50AM	824

ECONOMICS

CRN	COURSE	TITLE	CR	DATE	DAYS	TIME	COST
11737	ECON201N	Microeconomics (P) HYBRID	3	08/31-12/19	T	03:00-04:50PM	714
11738	ECON201N	Microeconomics (P)	3	08/31-12/19		Online	714
11910	ECON202N	Macroeconomics (P) (NoLo)	3	08/31-12/19	M	08:00-08:50AM	714
					W	08:00-09:50AM	

EARLY CHILDHOOD EDUCATION

CRN	COURSE	TITLE	CR	DATE	DAYS	TIME	COST
11919	ECE101N	Found of Early Childhood Ed	3	08/31-12/19	W	06:00-08:30PM	714
12023	ECE101N	Found of Early Childhood Ed HYBRID	3	08/31-10/24	S	09:00-11:50AM	714
11918	ECE102N	Growth and Dev of Young Child (NoLo)	3	08/31-12/19	M	06:00-08:30PM	714
12033	ECE102N	Growth and Dev of Young Child (H) (NoLo)	3	10/26-12/19	S	09:00-11:50AM	714
11815	ECE190N	ECE Practicum I (P) (NoLo)	3	08/31-12/19	F	08:00-04:50PM	714
					T	06:00-06:50PM	
12024	ECE200N	Dev App Prog Infants & Tod (P) (H) (NoLo)	3	08/31-10/24	R	06:00-09:00PM	714
11816	ECE204N	Behavior Guid & Class Mgmt ECE (P)	3	08/31-12/19	W	06:00-08:30PM	714
11924	ECE215N	Creativity and the Young Child (P)	3	08/31-12/19	M	06:00-08:30PM	714

EDUCATION

CRN	COURSE	TITLE	CR	DATE	DAYS	TIME	COST
11817	EDU130N	Foundations of Education	3	08/31-12/19	M	06:00-08:50PM	714

ELECTRONIC ENGINEERING

CRN	COURSE	TITLE	CR	DATE	DAYS	TIME	COST
11996	ELET115N	Intro to Programming Using C++ (P)	3	08/31-12/19	M	03:00-04:50PM	874
11997	ELET115N	Intro to Programming Using C++ (P) (LAB)	0	08/31-12/19	W	03:00-05:50PM	0
11991	ELET121N	Digital Circuits (P/C)	3	08/31-12/19	R	06:00-07:50PM	874
					T	06:00-08:30PM	
11895	ELET121N	Digital Circuits (P/C)	3	08/31-12/19	M	10:00-11:50AM	874
11968	ELET121N	Digital Circuits (P/C) (LAB)	0	08/31-12/19	W	09:00-11:50AM	
11896	ELET131N	Circuit Analysis I (P/C)	4	08/31-12/19	M	06:00-08:30PM	1112
					W	06:00-08:30PM	
11897	ELET131N	Circuit Analysis I (P/C)	4	08/31-12/19	W	12:00-02:50PM	1112
11898	ELET131N	Circuit Analysis I (P/C) (LAB)	0	08/31-12/19	T	12:00-02:50PM	
13514	ELET131N	Circuit Analysis I (P/C) (LAB)	0	08/31-12/19	T	03:00-05:50PM	
11921	ELET241N	Electronics II (P)	4	08/31-12/19	M	06:00-08:30PM	1112
					W	06:00-08:30PM	
11899	ELET250N	Microcontrollers (P)	4	08/31-12/19	T	06:00-08:50PM	1112
11989	ELET250N	Microcontrollers (P) (LAB)	0	08/31-12/19	R	03:00-05:50PM	
11990	ELET250N	Microcontrollers (P)	0	08/31-12/19	R	06:00-08:50PM	

ENGLISH

CRN	COURSE	TITLE	CR	DATE	DAYS	TIME	COST
11753	ENGL101N	College Composition (P/C) (NoLo)	4	08/31-12/19	T	06:00-09:30PM	952
12459	ENGL001N	CoReq English Workshop (P/C)	0	08/31-12/19	R	06:00-07:50PM	0
12034	ENGL101N	College Composition (P/C) (NoLo)	4	08/31-12/19	T	06:00-09:30PM	952
12464	ENGL001N	CoReq English Workshop (P/C)	0	08/31-12/19	R	05:00-06:50PM	0
11932	ENGL101N	College Composition (P/C) (NoLo)	4	08/31-12/19	M	08:00-09:50AM	952
					W	08:00-09:50AM	
12460	ENGL001N	CoReq English Workshop (P/C)	0	08/31-12/19	F	08:00-09:50AM	0
11760	ENGL101N	College Composition (P/C) (NoLo)	4	08/31-12/19	M	01:00-02:50PM	952
					W	01:00-02:50PM	
12461	ENGL001N	CoReq English Workshop (P/C)	0	08/31-12/19	F	01:00-02:50PM	0
11754	ENGL101N	College Composition (P/C) (NoLo)	4	08/31-12/19	M	10:00-11:50AM	952
					W	10:00-11:50AM	
12462	ENGL001N	CoReq English Workshop (P/C)	0	08/31-12/19	F	10:00-11:50AM	0
11761	ENGL101N	College Composition (P/C) (NoLo)	4	08/31-12/19	MW	03:00-04:50PM	952
12463	ENGL001N	CoReq English Workshop (P/C)	0	08/31-12/19	F	03:00-04:50PM	0
11933	ENGL101N	College Composition (P/C) (NoLo)	4	08/31-12/19	M	08:00-09:50AM	952
					W	08:00-09:50AM	
11934	ENGL101N	College Composition (P/C) (NoLo)	4	08/31-12/19	M	01:00-02:50PM	952
					W	01:00-02:50PM	
11755	ENGL101N	College Composition (P/C) (NoLo)	4	08/31-12/19	R	10:00-11:50AM	952
					T	10:00-11:50AM	
11756	ENGL101N	College Composition (P/C) (NoLo)	4	08/31-12/19	R	10:00-11:50AM	952
					T	10:00-11:50AM	
12466	ENGL001N	CoReq English Workshop (P/C)	0	08/31-12/19	F	10:00-11:50AM	0
11757	ENGL101N	College Composition (P/C) (NoLo)	4	08/31-12/19	TR	03:00-04:50PM	952
11758	ENGL101N	College Composition (P/C) (NoLo)	4	08/31-12/19	TR	08:00-09:50AM	952
12467	ENGL001N	CoReq English Workshop (P/C)	0	08/31-12/19	F	08:00-09:50AM	0
11759	ENGL101N	College Composition (P/C) (NoLo)	4	08/31-12/19	F	10:00-11:50AM	952
					W	10:00-11:50AM	
12465	ENGL001N	CoReq English Workshop (P/C)	0	08/31-12/19	M	10:00-11:50AM	0
11762	ENGL101N	College Composition (P/C) (NoLo)	4	08/31-12/19	TR	01:00-02:50PM	952
12468	ENGL001N	CoReq English Workshop (P/C)	0	08/31-12/19	F	01:00-02:50PM	0
11763	ENGL101N	College Composition (P/C) (NoLo)	4	08/31-12/19		Online	952
12025	ENGL101N	College Composition (P/C) (NoLo)	4	08/31-10/24	MW	06:00-09:30PM	952
12055	ENGL101N	College Composition (P/C) HYBRID (NoLo)	4	08/31-10/24	S	08:00-11:50AM	952
12075	ENGL101N	College Composition (P/C) (NoLo)	4	10/26-12/19	TR	06:00-09:30PM	952
11764	ENGL103N	Prof. Writing & Presentation (P)	3	08/31-12/19		Online	714
11765	ENGL105N	Introduction to Literature (P)	3	08/31-12/19	M	10:00-11:50AM	714
					W	10:00-10:50AM	
11766	ENGL105N	Introduction to Literature (P)	3	08/31-12/19		Online	714
11767	ENGL109N	Public Speaking (P) (NoLo)	3	08/31-12/19	R	08:00-08:50AM	714
					T	08:00-09:50AM	
11768	ENGL109N	Public Speaking (P) (NoLo)	3	08/31-12/19	R	10:00-11:50AM	714
					T	10:00-10:50AM	
11915	ENGL109N	Public Speaking (P) (NoLo)	3	08/31-12/19		Online	714
12035	ENGL109N	Public Speaking (P) (NoLo)	3	10/26-12/19	TR	06:00-08:30PM	714
11775	ENGL110N	Honors Expository Writing (P) (NoLo)	4	08/31-12/19	TR	01:00-02:50PM	952
12056	ENGL122N	Technical Writing (P) HYBRID (NoLo)	3	10/26-12/19	S	09:00-11:50AM	714
11769	ENGL206N	Writing Short Stories (P)	3	08/31-12/19	F	09:00-11:50AM	714
12469	ENGL215N	Literature by American Women (P) (H) (NoLo)	3	08/31-12/19	R	01:00-02:50PM	714
11770	ENGL230N	British Lit Middle Age to 1800 (P) (NoLo)	3	08/31-12/19	F	01:00-01:50PM	714
					W	01:00-02:50PM	
13515	ENGL250N	Honors Adv Creative Writing (P)	3	08/31-12/19	W	06:00-08:30PM	714

ENGLISH SPEAKERS OF OTHER LANGUAGES

CRN	COURSE	TITLE	CR	DATE	DAYS	TIME	COST
12063	ESOL074N	Grammar for Writing IV (P)	3	08/31-12/19	M	08:30-12:30PM	824
12064	ESOL074N	Grammar for Writing IV (P)	3	08/31-10/24	MW	05:00-10:00PM	824
12046	ESOL075N	Grammar for Writing V (P)	3	10/26-12/19	MW	05:00-10:00PM	824
12065	ESOL086N	Aca Writ for Eng Lang Learn II	3	08/31-10/24	TR	05:00-10:00PM	824
11994	ESOL088N	Aca Writ for Eng Lang Lear III	3	08/31-12/19	TR	09:30-11:50AM	824
12047	ESOL088N	Aca Writ for Eng Lang Lear III	3	10/26-12/19	TR	05:00-10:00PM	824
12066	ESOL096N	Aca Writ for Eng Lang Lear IV	3	08/31-12/19	F	09:30-02:00PM	824

FINE ARTS

CRN	COURSE	TITLE	CR	DATE	DAYS	TIME	COST
11771	ARTS101N	Introduction to Drawing	3	08/31-12/19	T	01:00-03:50PM	714
12020	ARTS101N	Introduction to Drawing	3	08/31-10/24	MW	06:00-08:30PM	714
11772	ARTS111N	Photography/Digital Imaging I (NoLo)	3	08/31-12/19	M	06:00-09:30PM	824
11773	ARTS111N	Photography/Digital Imaging I (NoLo)	3	08/31-12/19	TR	10:00-11:50AM	824
11774	ARTS120N	Graphic Design Theory (NoLo)	3	08/31-12/19	R	06:00-09:30PM	824

GEOGRAPHY

CRN	COURSE	TITLE	CR	DATE	DAYS	TIME	COST
11913	GEOG110N	World Regional Geography	3	08/31-12/19	M W	01:00-02:50PM 01:00-01:50PM	714

HISTORY

CRN	COURSE	TITLE	CR	DATE	DAYS	TIME	COST
11739	HIST101N	West Civ Ancient Time to 1700 (NoLo)	3	08/31-12/19	R T	10:00-11:50AM 10:00-10:50AM	714
11740	HIST101N	West Civ Ancient Time to 1700 (NoLo)	3	08/31-12/19	R T	03:00-03:50PM 03:00-04:50PM	714
11741	HIST110N	Ancient Civilizations of World	3	08/31-12/19	M W	03:00-03:50PM 03:00-04:50PM	714
11742	HIST140N	US History Colonial to Recon (NoLo)	3	08/31-12/19	M W	01:00-02:50PM 01:00-01:50PM	714
11743	HIST140N	US History Colonial to Recon (NoLo)	3	08/31-12/19	R T	08:00-08:50AM 08:00-09:50AM	714
11744	HIST140N	US History Colonial to Recon (NoLo)	3	08/31-12/19		Online	714
12051	HIST141N	US History Since Recon (NoLo)	3	10/26-12/19	TR	06:00-08:30PM	714
11745	HIST241N	American Constitution History (P)	3	08/31-12/19	R	06:00-08:30PM	714
12472	HIST246N	Modern America (P)	3	08/31-12/19	R T	01:00-01:50PM 01:00-02:50PM	714

HONORS

CRN	COURSE	TITLE	CR	DATE	DAYS	TIME	COST
11775	ENGL110N	Honors Expository Writing (P)	4	08/31-12/19	TR	01:00-02:50PM	952
13515	ENGL250N	Honors Adv Creative Writing (P)	3	08/31-12/19	W	06:00-08:30PM	714

HUMANITIES

CRN	COURSE	TITLE	CR	DATE	DAYS	TIME	COST
11778	HUMA101N	Introduction to Humanities	3	08/31-12/19	R T	01:00-01:50PM 01:00-02:50PM	714
12036	HUMA101N	Introduction to Humanities	3	08/31-12/19		Online	714
12076	HUMA101N	Introduction to Humanities	3	10/26-12/19		Online	714
11998	HUMA110N	Critical Thinking Skills (P)	3	08/31-12/19		Online	714
11779	HUMA102N	Art Appreciation	3	08/31-12/19	F	09:00-11:50AM	714
11780	HUMA140N	American Cinema	3	08/31-12/19	M	01:00-03:50PM	714
13503	HUMA220N	Classic Myths in Western Civ (P) HYBRID	3	08/31-12/19	R	01:00-02:50PM	714
11781	HUMA230N	Ethics in the Workplace (P) (NoLo)	3	08/31-12/19	M W	01:00-02:50PM 01:00-01:50PM	714
11782	HUMA230N	Ethics in the Workplace (P) (NoLo)	3	08/31-12/19		Online	714

HUMAN SERVICES

CRN	COURSE	TITLE	CR	DATE	DAYS	TIME	COST
11853	HSV111N	Introduction to Human Services (C) HYBRID	3	08/31-12/19	W	06:00-08:30PM	714

MATHEMATICS

CRN	COURSE	TITLE	CR	DATE	DAYS	TIME	COST
11927	MATH103N	Quantitative Reasoning (P/C)	4	08/31-12/19	T	06:00-09:30PM	952
12473	MATH003N	CoReq Math Workshop-Quan (P/C)	0	08/31-12/19	R	06:00-07:50PM	0
11783	MATH103N	Quantitative Reasoning (P/C)	4	08/31-12/19	MW	08:00-09:50AM	952
12474	MATH003N	CoReq Math Workshop-Quan (P/C)	0	08/31-12/19	F	08:00-09:50AM	0
11926	MATH103N	Quantitative Reasoning (P/C)	4	08/31-12/19	MW	01:00-02:50PM	952
12475	MATH003N	CoReq Math Workshop-Quan (P/C)	0	08/31-12/19	F	01:00-02:50PM	0
11925	MATH103N	Quantitative Reasoning (P/C)	4	08/31-12/19	TR	08:00-09:50AM	952
12476	MATH003N	CoReq Math Workshop-Quan (P/C)	0	08/31-12/19	F	08:00-09:50AM	0
12491	MATH103N	Quantitative Reasoning (P/C)	4	08/31-12/19	Online		952
11784	MATH106N	Statistics I (P/C) (NoLo)	4	08/31-12/19	T	06:00-09:30PM	952
12477	MATH006N	CoReq Math Workshop-Stats (P/C)	0	08/31-12/19	R	06:00-07:50PM	0
11785	MATH106N	Statistics I (P/C) (NoLo)	4	08/31-12/19	MW	08:00-09:50AM	952
12478	MATH006N	CoReq Math Workshop-Stats (P/C)	0	08/31-12/19	F	08:00-09:50AM	0
11786	MATH106N	Statistics I (P/C) (NoLo)	4	08/31-12/19	TR	08:00-09:50AM	952
12479	MATH006N	CoReq Math Workshop-Stats (P/C)	0	08/31-12/31	F	10:00-11:50AM	0
11787	MATH106N	Statistics I (P/C) (NoLo)	4	08/31-12/19	MW	10:00-11:50AM	952
12480	MATH006N	CoReq Math Workshop-Stats (P/C)	0	08/31-12/19	F	08:00-09:50AM	0
11788	MATH106N	Statistics I (P/C) (NoLo)	4	08/31-12/19	TR	10:00-11:50AM	952
12481	MATH006N	CoReq Math Workshop-Stats (P/C)	0	08/31-12/19	F	10:00-11:50AM	0
11789	MATH106N	Statistics I (P/C) (NoLo)	4	08/31-12/19	MW	01:00-02:50PM	952
12482	MATH006N	CoReq Math Workshop-Stats (P/C)	0	08/31-12/19	F	01:00-02:50PM	0
11790	MATH106N	Statistics I (P/C) (NoLo)	4	08/31-12/19	TR	01:00-02:50PM	952
12483	MATH006N	CoReq Math Workshop-Stats (P/C)	0	08/31-12/19	F	03:00-04:50PM	0
11928	MATH106N	Statistics I (P/C) (NoLo)	4	08/31-12/19	MW	03:00-04:50PM	952
12484	MATH006N	CoReq Math Workshop-Stats (P/C)	0	08/31-12/19	F	01:00-02:50PM	0
11929	MATH106N	Statistics I (P/C) (NoLo)	4	08/31-12/19	TR	03:00-04:50PM	952
12485	MATH006N	CoReq Math Workshop-Stats (P/C)	0	08/31-12/19	F	03:00-04:50PM	0
11948	MATH106N	Statistics I (P/C) (NoLo)	4	08/31-12/19	Online		952
12037	MATH106N	Statistics I (P/C) (NoLo)	4	10/26-12/19	MW	06:00-09:30PM	952
11969	MATH107N	Honors Statistics I (P) (NoLo)	4	08/31-12/19	MW	01:00-02:50PM	952
11791	MATH110N	Algebra & Trigonometry (P/C) (NoLo)	4	08/31-12/19	T	06:00-09:30PM	952
12486	MATH010N	CoReq Math Workshop-Alg & Trig (P/C)	0	08/31-12/19	R	06:00-07:50PM	0
11792	MATH110N	Algebra & Trigonometry (P/C) (NoLo)	4	08/31-12/19	TR	08:00-09:50AM	952
12487	MATH010N	CoReq Math Workshop-Alg & Trig (P/C)	0	08/31-12/19	F	08:00-09:50AM	0
11793	MATH110N	Algebra & Trigonometry (P/C) (NoLo)	4	08/31-12/19	TR	10:00-11:50AM	952
12488	MATH010N	CoReq Math Workshop-Alg & Trig (P/C)	0	08/31-12/19	F	08:00-09:50AM	0
11794	MATH110N	Algebra & Trigonometry (P/C) (NoLo)	4	08/31-12/19	TR	03:00-04:50PM	952
12489	MATH010N	CoReq Math Workshop-Alg & Trig (P/C)	0	08/31-12/19	F	03:00-04:50PM	0
11795	MATH110N	Algebra & Trigonometry (P/C) (NoLo)	4	08/31-12/19	Online		952
11930	MATH110N	Algebra & Trigonometry (P/C) (NoLo)	4	08/31-12/19	MW	10:00-11:50AM	952
12490	MATH010N	CoReq Math Workshop-Alg & Trig (P/C)	0	08/31-12/19	F	10:00-11:50AM	0
11796	MATH120N	Precalculus (P) (NoLo)	4	08/31-12/19	MW	10:00-11:50AM	952
11946	MATH120N	Precalculus (P) (NoLo)	4	08/31-12/19	Online		952
11979	MATH170N	Discrete Mathematics (P)	4	08/31-12/19	MW	04:00-05:50PM	952
11797	MATH210N	Calculus I (P)	4	08/31-12/19	MW	10:00-11:50AM	952
11798	MATH212N	Calculus III-Multivariate Calc (P/C)	4	08/31-12/19	TR	04:00-05:50PM	952

MECHANICAL DESIGN

CRN	COURSE	TITLE	CR	DATE	DAYS	TIME	COST
11842	CAD111N	CADD I	5	08/31-12/19	TR	05:30-08:20PM	1460
11843	CAD215N	CADD III (P)	5	08/31-12/19	MW	05:30-09:10PM	1460
11844	ELMT203N	Applied Mechanics I (C)	3	08/31-12/19	T	05:30-09:00PM	764

PARALEGAL STUDIES

CRN	COURSE	TITLE	CR	DATE	DAYS	TIME	COST
12026	PLGL101N	Basic Legal Studies (P/C)	3	08/31-10/24	TR	06:00-08:30PM	764
12038	PLGL102N	Legal Research and Writing (P)	3	10/26-12/19	TR	06:00-09:30PM	714
11854	PLGL210N	Litigation and Trial Prep (P/C)	3	08/31-12/19	W	06:00-08:30PM	764
11855	PLGL220N	Real Estate Law (P/C)	3	08/31-12/19	T	06:00-08:30PM	714

PHILOSOPHY

CRN	COURSE	TITLE	CR	DATE	DAYS	TIME	COST
11777	PHIL130N	Honor Ancient Greek Philosophy (P/C)	3	08/31-12/19	R T	05:00-05:50PM 05:00-06:50PM	714

POLITICAL SCIENCE

CRN	COURSE	TITLE	CR	DATE	DAYS	TIME	COST
11746	POLS102N	American Gov and Politics (NoLo)	3	08/31-12/19	M W	08:00-09:50AM 08:00-08:50AM	714
11747	POLS210N	State and Local Government (P)	3	08/31-12/19	M W	10:00-11:50AM 11:00-11:50AM	714
11748	POLS220N	American Politics and Mass Med (P)	3	08/31-12/19	R T	10:00-11:50AM 11:00-11:50AM	714

PRECISION MANUFACTURING

CRN	COURSE	TITLE	CR	DATE	DAYS	TIME	COST
11845	MTTN101N	Manufacturing Processes HYBRID	3	08/31-12/19	MT	10:00-10:50AM	764
11901	MTTN101N	Manufacturing Processes HYBRID	3	08/31-12/19	W	06:00-07:30PM	764
11846	MTTN111N	Mach Tool Proc and Theory I HYBRID (LAB)	6	08/31-12/19	MT	11:00-11:50AM	1808
11847	MTTN111N	Mach Tool Proc and Theory I (LAB)	0	08/31-12/19	F M W	09:00-11:50AM 02:00-04:50PM 01:00-03:50PM	
12067	MTTN111N	Mach Tool Proc and Theory I HYBRID	6	08/31-12/19	M M S	05:30-06:50PM 07:00-09:40PM 08:00-01:50PM	1808
11850	MTTN223N	Computer Aided Manufacturing (P)	3	08/31-12/19	W W	01:00-01:50PM 08:00-11:50AM	874
11848	MTTN231N	Advanced MTP and Theory I (P/C) (NoLo)	6	08/31-12/19	MTR	08:00-08:50AM	1808
11849	MTTN231N	Advanced MTP and Theory I (P/C) (LAB)	0	08/31-12/19	MTR	09:00-11:50AM	

PSYCHOLOGY

CRN	COURSE	TITLE	CR	DATE	DAYS	TIME	COST
11803	PSYC101N	Introduction to Psychology	3	08/31-12/19	M	01:00-02:50PM	714
					W	01:00-01:50PM	
11804	PSYC101N	Introduction to Psychology	3	08/31-12/19	R	11:00-11:50AM	714
					T	10:00-11:50AM	
11805	PSYC101N	Introduction to Psychology	3	08/31-12/19	M	10:00-11:50AM	714
					W	11:00-11:50AM	
11806	PSYC101N	Introduction to Psychology	3	08/31-12/19	R	01:00-01:50PM	714
					T	01:00-02:50PM	
12017	PSYC101N	Introduction to Psychology	3	08/31-12/19	R	08:00-09:50AM	714
					T	08:00-08:50AM	
11807	PSYC101N	Introduction to Psychology	3	08/31-12/19		Online	714
12027	PSYC101N	Introduction to Psychology HYBRID	3	08/31-10/24	S	09:00-11:50AM	714
12039	PSYC101N	Introduction to Psychology	3	10/26-12/19	MW	06:00-08:30PM	714
12078	PSYC101N	Introduction to Psychology	3	10/26-12/19		Online	714
11808	PSYC130N	Human Relations	3	08/31-12/19	R	01:00-02:50PM	714
					T	01:00-01:50PM	
11809	PSYC130N	Human Relations	3	08/31-12/19		Online	714
11916	PSYC130N	Human Relations	3	08/31-12/19	R	10:00-11:50AM	714
					T	10:00-10:50AM	
12053	PSYC130N	Human Relations HYBRID	3	10/26-12/19	S	09:00-11:50AM	714
11810	PSYC201N	Human Growth and Devel (P)	3	08/31-12/19	W	06:00-08:30PM	714
11811	PSYC201N	Human Growth and Devel (P)	3	08/31-12/19	R	01:00-01:50PM	714
					T	01:00-02:50PM	
11812	PSYC201N	Human Growth and Devel (P)	3	08/31-12/19		Online	714
13501	PSYC205N	Child Psychology (P) HYBRID	3	08/31-12/19	W	01:00-02:50PM	714
11980	PSYC206N	Learning and Behavior (P) HYBRID (NoLo)	3	08/31-12/19	M	06:00-08:50PM	714
11917	PSYC207N	Social Psychology (P)	3	08/31-12/19		Online	714
11813	PSYC210N	Abnormal Psychology (P)	3	08/31-12/19	F	10:00-11:50AM	714
					W	10:00-10:50AM	
11814	PSYC212N	Ind Counsel Theory and Prac (P) HYBRID	3	08/31-12/19	R	06:00-08:50PM	714
11999	PSYC220N	Research Methods (P) HYBRID	3	08/31-12/19	W	06:00-08:30PM	714
12061	PSYC240N	Drugs and Alcohol (P)	3	08/31-12/19		Online	714

SCIENCE

CRN	COURSE	TITLE	CR	DATE	DAYS	TIME	COST
11857	BIOL101N	Germes 101 (NoLo)	4	08/31-12/19	M	09:00-09:50AM	1062
					W	10:00-11:50AM	
11858	BIOL101N	Germes 101 (LAB)	0	08/31-12/19	M	10:00-11:50AM	
11859	BIOL105N	Bio in Foc: Cell Basis of Life	4	08/31-12/19	T	06:00-08:50PM	1062
11860	BIOL105N	Bio in Foc: Cell Basis of Life (LAB)	0	08/31-12/19	R	06:00-08:50PM	
11861	BIOL105N	Bio in Foc: Cell Basis of Life	4	08/31-12/19	R	08:00-08:50AM	1062
					T	08:00-09:50AM	
11862	BIOL105N	Bio in Foc: Cell Basis of Life (LAB)	0	08/31-12/19	R	09:00-11:50AM	
11902	BIOL105N	Bio in Foc: Cell Basis of Life	4	08/31-12/19	T	01:00-03:50PM	1062
11903	BIOL105N	Bio in Foc: Cell Basis of Life (LAB)	0	08/31-12/19	R	01:00-03:50PM	
11863	BIOL107N	Prin of Bio:Molecular and Cell (P)	4	08/31-12/19	R	09:00-11:50AM	1062
11864	BIOL107N	Prin of Bio:Molecular and Cell (P) (LAB)	0	08/31-12/19	T	09:00-11:50AM	
11870	BIOL115N	Nutrition	3	08/31-12/19		Online	714
11972	BIOL201N	Anatomy & Physiology I (P/C)	4	08/31-12/19	T	06:00-08:50PM	1062
11973	BIOL201N	Anatomy & Physiology I (P/C) (LAB)	0	08/31-12/19	R	06:00-08:50PM	
12452	BIOL0201	CoReq A & P I Workshop	0	08/31-12/19	F	05:00-06:50PM	0
12044	BIOL201N	Anatomy & Physiology I (P/C)	4	08/31-12/19	S	09:00-11:50AM	1062
12453	BIOL0201	CoReq A & P I Workshop	0	08/31-12/19	F	05:00-06:50PM	0
11949	BIOL201N	Anatomy & Physiology I (P/C)	4	08/31-12/19	M	10:00-11:50AM	1062
					W	11:00-11:50AM	
11971	BIOL201N	Anatomy & Physiology I (P/C) (LAB)	0	08/31-12/19	W	01:00-03:50PM	
12454	BIOL0201	CoReq A & P I Workshop	0	08/31-12/19	F	01:00-02:50PM	0
11984	BIOL202N	Anatomy & Physiology II (P)	4	08/31-12/19	W	06:00-08:50PM	1062
11985	BIOL202N	Anatomy & Physiology II (P) (LAB)	0	08/31-12/19	M	06:00-08:50PM	
12455	BIOL207N	Immunology (P)	3	08/31-12/19	W	09:00-11:50AM	714
11974	BIOL215N	Microbiology (P)	4	08/31-12/19	R	02:00-04:50PM	1062
11975	BIOL215N	Microbiology (P) (LAB)	0	08/31-12/19	T	02:00-04:50PM	
12010	BIOL220N	Ecology (P)	4	08/31-12/19	M	01:00-03:50PM	1062
					W	01:00-03:50PM	
11871	CHEM110N	Chemistry for Health Sciences	4	08/31-12/19	R	06:00-08:50PM	1062
11872	CHEM110N	Chemistry for Health Sciences (LAB)	0	08/31-12/19	T	06:00-07:50PM	
11873	CHEM110N	Chemistry for Health Sciences	4	08/31-12/19	R	08:00-09:50AM	1062
					T	08:00-08:50AM	
11874	CHEM110N	Chemistry for Health Sciences (LAB)	0	08/31-12/19	T	10:00-11:50AM	
11904	CHEM110N	Chemistry for Health Sciences	4	08/31-12/19	R	02:00-04:50PM	1062
11920	CHEM110N	Chemistry for Health Sciences (LAB)	0	08/31-12/19	T	03:00-04:50PM	
11875	CHEM130N	General Chemistry I (P)	4	08/31-12/19	M	06:00-08:50PM	1062
11876	CHEM130N	General Chemistry I (P) (LAB)	0	08/31-12/19	W	06:00-08:50PM	
11877	CHEM130N	General Chemistry I (P)	4	08/31-12/19	M	03:00-05:50PM	1062
11878	CHEM130N	General Chemistry I (P) (LAB)	0	08/31-12/19	W	03:00-05:50PM	
12068	CHEM131N	General Chemistry II (P/C)	4	08/31-12/19	W	06:00-08:50PM	1062
12069	CHEM131N	General Chemistry II (P/C) (LAB)	0	08/31-12/19	M	06:00-08:50PM	
11865	ENVS101N	Environmental Science	4	08/31-12/19	W	06:00-08:50PM	1062
11866	ENVS101N	Environmental Science (LAB)	0	08/31-12/19	M	06:00-07:50PM	
11867	ENVS101N	Environmental Science	4	08/31-12/19	F	01:00-02:50PM	1062
					W	02:00-02:50PM	
11868	ENVS101N	Environmental Science (LAB)	0	08/31-12/19	W	03:00-04:50PM	
11905	ENVS101N	Environmental Science	4	08/31-12/19	F	09:00-09:50AM	1062
					W	08:00-09:50AM	
11906	ENVS101N	Environmental Science (LAB)	0	08/31-12/19	F	10:00-11:50AM	

SCIENCE CONTINUED

CRN	COURSE	TITLE	CR	DATE	DAYS	TIME	COST
11800	PHYS101N	Physical Science I (P)	4	08/31-12/19	R	01:00-01:50PM	1062
					R	02:00-03:50PM	
					T	01:00-02:50PM	
11801	PHYS101N	Physical Science I (P)	4	08/31-12/19	R	09:00-09:50AM	1062
					TR	10:00-11:50AM	1062
11900	PHYS101N	Physical Science I (P)	4	08/31-12/19		Online	1062
12492	PHYS101N	Physical Science I (P)	4	08/31-12/19	MF	08:00-09:50AM	1062
					W	09:00-09:50AM	1062
11799	PHYS115N	Astronomy	4	08/31-12/19	MW	06:00-08:10PM	1062
11907	PHYS115N	Astronomy	4	08/31-12/19		Online	1062
13558	PHYS130N	Physics I (P)	4	08/31-12/19	MWF	10:00-11:50AM	1062
11938	PHYS131N	Physics II (P)	4	08/31-12/19	MWF	03:00-04:50PM	1062
11802	PHYS230N	Calculus Based Physics I (P/C)	4	08/31-12/19	MWF	01:00-02:50PM	1062

SOCIOLOGY

CRN	COURSE	TITLE	CR	DATE	DAYS	TIME	COST
11911	ANTH105N	Ethnography of Work (NoLo)	3	08/31-12/19	M	03:00-04:50PM	714
					W	03:00-03:50PM	714
11912	ANTH105N	Ethnography of Work (NoLo)	3	08/31-12/19	M	10:00-11:50AM	714
					W	10:00-10:50AM	714
11970	ANTH105N	Ethnography of Work (NoLo)	3	08/31-12/19	R	03:00-03:50PM	714
					T	03:00-04:50PM	714
12079	ANTH108N	Introduction to Archaeology	3	08/31-12/19	M	08:00-09:50AM	714
					W	08:00-08:50AM	714
11749	SOCI101N	Introduction to Sociology	3	08/31-12/19	M	01:00-02:50PM	714
					W	01:00-01:50PM	714
11750	SOCI101N	Introduction to Sociology	3	08/31-12/19	R	10:00-10:50AM	714
					T	10:00-11:50AM	714
11751	SOCI101N	Introduction to Sociology	3	08/31-12/19		Online	714

WORLD LANGUAGES

CRN	COURSE	TITLE	CR	DATE	DAYS	TIME	COST
11880	ASL120N	Sign Language I (NoLo)	3	08/31-12/19	W	02:00-04:50PM	714
12451	ASL220N	Sign Language III (P)	3	08/31-12/19	W	06:00-08:30PM	714
11879	SPAN105N	Spanish I	3	08/31-12/19	F	09:00-11:50AM	714
12043	SPAN106N	Spanish II (P)	3	08/31-12/19	T	06:00-08:30PM	714

100% ONLINE COURSES

CRN	COURSE	TITLE	CR	DATE	TIME	COST
11733	BCPT119N	Software Applications	3	08/31-12/19	Online	824
11870	BIOL115N	Nutrition	3	08/31-12/19	Online	714
11723	BUS101N	Introduction to Business	3	08/31-12/19	Online	714
11724	BUS110N	Principles of Management	3	08/31-12/19	Online	714
11725	BUS201N	Human Resource Management (P)	3	08/31-12/19	Online	714
11730	BUS240N	Business Law	3	08/31-12/19	Online	714
12062	CRMJ101N	Intro to Criminal Justice	3	08/31-12/19	Online	714
13635	CRMJ280N	Criminal Justice Internship (P)	3	08/31-12/19	Online	714
12496	CSCI107N	HTML	3	08/31-12/19	Online	824
11987	CSCN116N	Networking Basics (P/C)	3	08/31-12/19	Online	874
11960	CSCN204N	Administering Windows Servers (P)	3	08/31-12/19	Online	874
12050	CULA235A	Customer Service I	2	08/31-12/19	Online	586
11738	ECON201N	Microeconomics (P)	3	08/31-12/19	Online	714
11763	ENGL101N	College Composition (P/C)	4	08/31-12/19	Online	952
11764	ENGL103N	Prof. Writing & Presentation (P)	3	08/31-12/19	Online	714
11766	ENGL105N	Introduction to Literature (P)	3	08/31-12/19	Online	714
11915	ENGL109N	Public Speaking (P)	3	08/31-12/19	Online	714
11744	HIST140N	US History Colonial to Recon	3	08/31-12/19	Online	714
12036	HUMA101N	Introduction to Humanities (NoLo)	3	08/31-12/19	Online	714
12076	HUMA101N	Introduction to Humanities (NoLo)	3	10/26-12/19	Online	714
11998	HUMA110N	Critical Thinking Skills (P)	3	08/31-12/19	Online	714
11782	HUMA230N	Ethics in the Workplace (P) (NoLo)	3	08/31-12/19	Online	714
12491	MATH103N	Quantitative Reasoning (P/C)	4	08/31-12/19	Online	952
11948	MATH106N	Statistics I (P/C)	4	08/31-12/19	Online	952
11795	MATH110N	Algebra & Trigonometry (P/C)	4	08/31-12/19	Online	952
11946	MATH120N	Precalculus (P)	4	08/31-12/19	Online	952
11900	PHYS101N	Physical Science I (P)	4	08/31-12/19	Online	1062
11907	PHYS115N	Astronomy	4	08/31-12/19	Online	1062
11807	PSYC101N	Introduction to Psychology	3	08/31-12/19	Online	714
12078	PSYC101N	Introduction to Psychology	3	10/26-12/19	Online	714
11809	PSYC130N	Human Relations	3	08/31-12/19	Online	714
11812	PSYC201N	Human Growth and Devel (P)	3	08/31-12/19	Online	714
11917	PSYC207N	Social Psychology (P)	3	08/31-12/19	Online	714
12061	PSYC240N	Drugs and Alcohol (P)	3	08/31-12/19	Online	714
11751	SOCI101N	Introduction to Sociology	3	08/31-12/19	Online	714